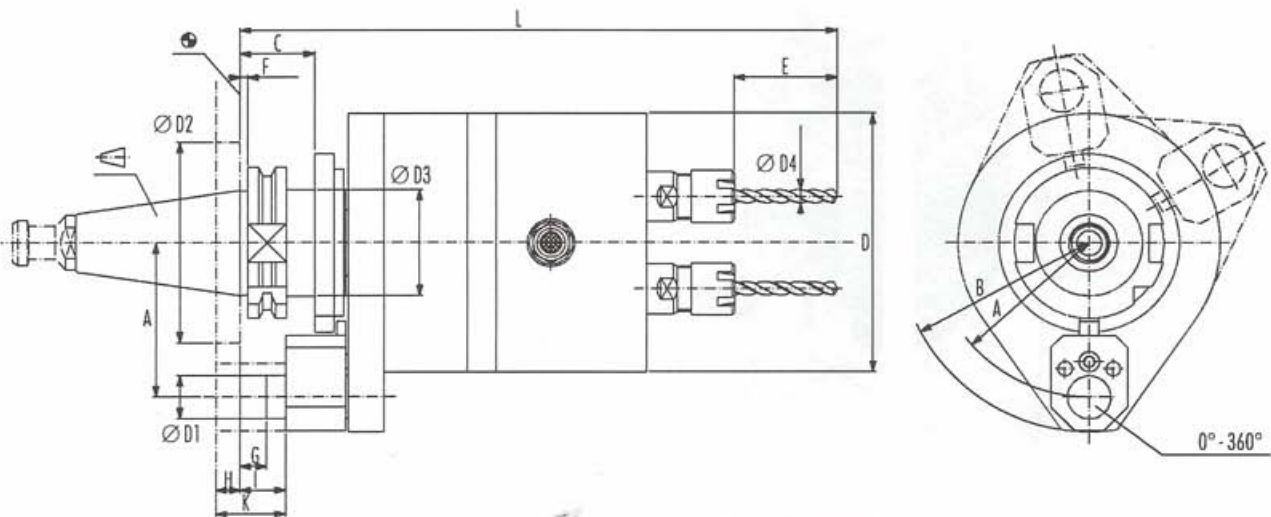


## Questionnaire for CNC adaptation



### Adaption to any machines

	shank type
	gauge line
A	radius of the orientation locator
B	maximum allowable radius
C	distance  locking disc
D	maximum size of the multihead body
D1	$\varnothing$ of the orientation locator
D2	$\varnothing$ of the spindle nose
D3	$\varnothing$ of the main spindle
D4	$\varnothing$ of the tool
E	minimum length of the tool
F	distance  flange
G	distance  locator
H	distance  orientation locator face
I	distance  orientation locator block
K	thickness of orientation locator block
L	allowable length
$\alpha$	angular position of orientation locator
M	allowable weight